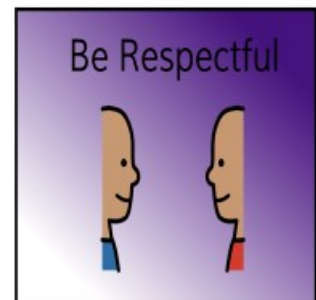
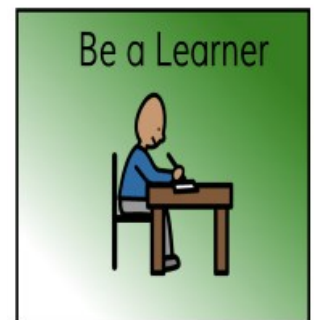


# Life education



**DON'T  
DREAM  
YOUR LIFE  
live your  
DREAM**



## Jokes of the week

How do bees get to school?  
By the school buzz!

Why are bees hair so sticky?  
Because they use honey comb!

Why did the broom get a bad grade?  
Because the broom was always sweeping!



## IMPORTANT DATES for TERM 1 2022

- Fri Feb 25th—Welcome Day Luncheon—12 noon—All Welcome
- Mon March 14th—Labour Day Public Holiday—No students at School
- Mon 21st Feb—Harmony Day
- Fri April 8th—End of Term 1

# Parents and Friends Club EVENTS THIS TERM

Pr e siden t:: Michelle Boyle S ecr etary: To n a O'Co nnor Tr e as ur er: Jodie Lenno n

Elections for positions on the Parents and Friends Committee will be held at the end of March. Anyone who is interested in contributing to supporting fundraising in the school, the positions that we have are:

President

Secretary

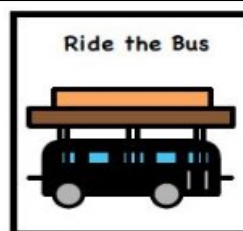
Treasurer

Committee Member

Parents and Friends is a great way to meet families within our school community and raise funds to support our amazing kids.

Please contact the office if you would like any further information or if you

## SOUTH GIPPSLAND SPECIALIST SCHOOL: BUS CHAPERONE/DRIVER CONTACT INFORMATION UPDATED: 2021



BUS RUN	DRIVER	CHAPERONE	CONTACT NUMBER
Kongwak	Maria Priestley	Wendy Green	0417 161 287
Nyora	Bec farmer	Kay Hills	0407 405 580
Welshpool	Greg Caple	Helen Beasley	0438 360 418
Taxi	Neil Green	Ava Kennedy	0409 006 326

## CHEW TOYS FOR SALE

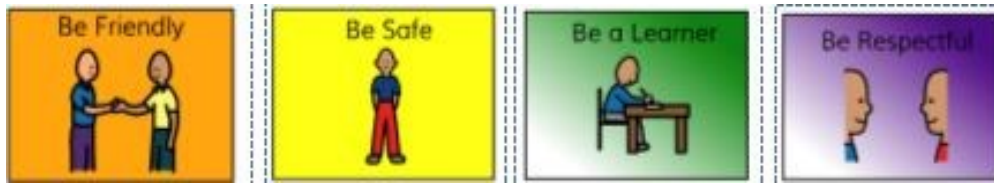
We have a variety of chew toys for students if any parents wish to purchase them.

Please see Sam or Jodie in the Office.

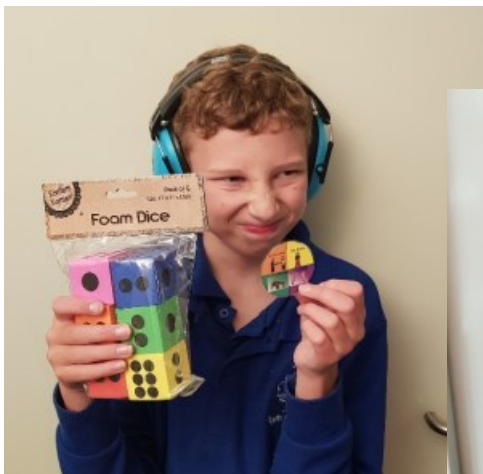
Prices from \$18.



# Token Winners!



Well done for displaying the school values this week by being friendly, being safe, being a learner, and being respectful. Jasmine, Nathan, Grace, Teaniesha, Samantha, Ryder, Alec and Mitch.



Well done everyone!

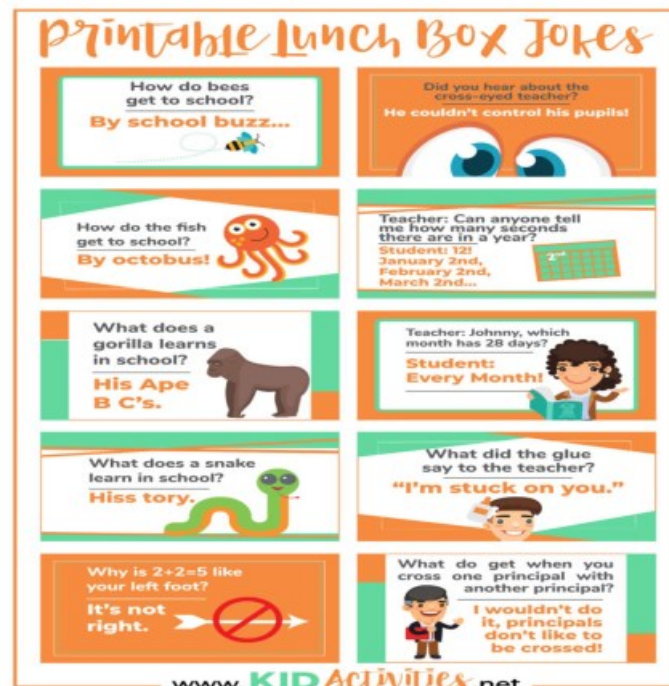
# HEALTHY LUNCH IDEA:

## INGREDIENTS

- 6 Strawberries
- 6 (approx 14g each) Chunks of Cantaloupe melon
- 6 (approx 14g each) Chunks Pineapple
- 3 Thick slices of kiwi (cut in half)
- 12 Blueberries
- 6 Grapes

## INSTRUCTIONS

Thread 1 strawberry, 1 cantaloupe melon chunk, 1 pineapple chunk, 1 half kiwi slice, 2 blueberries and 1 grape onto a bamboo skewer approx. 9cm (7.5inch) long. Place on a platter and serve with a dip of choice.

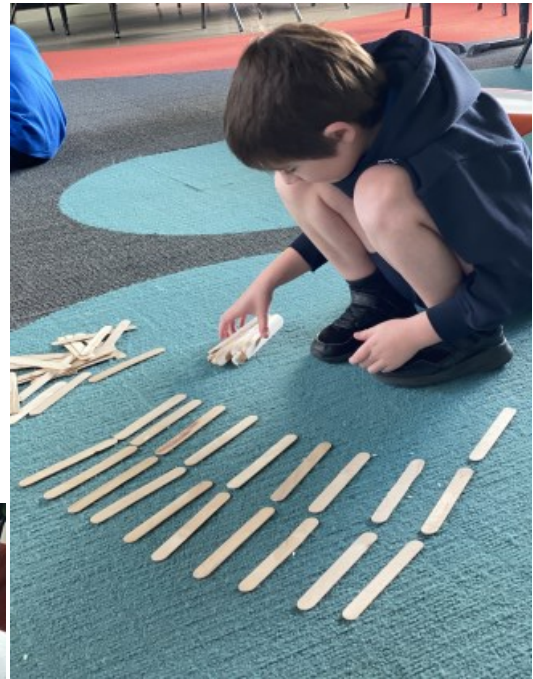


## Ireland

**Ireland is a great country. St. Patrick's Day was first created in Ireland. St. Patrick's Day is the feast day of St. Patrick, a patron saint of Ireland. This was originally celebrated with a religious feast and services.**

**Saint Patrick's Day is celebrated on Thursday, March 17, 2022.**

*Created by Sky-Anne Bone of Room 9*



Room 2 students have had a fantastic start to the school year!

They have all returned eager to learn and excited to see their friends. It has been lovely to watch the group socialise, share and work together.

Over the past couple of weeks room 2 have been exploring numbers, 2D and 3D shapes and prepositions in math. In English we have been working on phonological awareness, sight and cvc words as well as writing activities.

Students are encouraged to respond to open-ended questions and tasks that allow them to build on their prior knowledge and to extend their current understandings.

It has been fantastic to watch the group engaged in all set tasks.

Well done team!

# Words from the Office

Dear Parents and Carers,

We have had such a wonderful week here at school. I really cannot believe how settled our students are in their classes. Well done to everyone. This year Room 9/10 students will be writing the school newsletter so we thank them for their efforts.

## POP UP VACCINATION CLINIC FOR 5– 11 YEAR OLDS

On Wednesday February 16th we are hosting a pop up vaccination clinic with the support of Health Watch Australia. Consent forms need to be returned by Tuesday next week.



## RAPID ANTIGEN TESTS

Yesterday we received our next supply of RA tests. These will go home next week for the following week. Thank you to all our families who have been trying really hard to implement this recommended procedure.

## IMMUNISATION CARDS

Last week we sent home Immunisation packs for our age equivalent Year 7, 10 and 12's. The forms must be returned even if you are not getting your child immunised. The shire needs to forms returned asap.

## PARENTS AND FRIENDS CLUB

The school's Parents and Friends Club is open for self nominations for members. The group meets twice a term to run fundraising activities for the school. It is also a great way to have supportive and informative conversations with other parents who are also on the same journey as yourselves. Contact the office if you wish to join.

## SSG's

Teachers have been running SSG's this week and next week to co-actively plan students goals with students and parents. It is important for families to be involved in this process so that the school and home are working together. The process is the teacher will make three attempts to contact families to arrange an appointment. If this is not successful, then the teacher will develop the students goals based on previous information.

## WELCOME DAY LUNCHEON

FRIDAY February 25th—12 noon. Please contact the office to book a seat. ALL WELCOME



Heather Braden  
Principal

**TOGETHER WE GROW.**

**Stay safe and healthy and have a great weekend.**

Tania Pell  
Assistant Principal

